

## Tech Note 6905

### Adding Windows Users to TSCS (Windows xp SP2)

It may be desirable to allow a number of your TSCS operators to log into Windows with various User Names and Passwords to allow access to individual network resources while using TSCS. Below are the steps to follow to accomplish this.

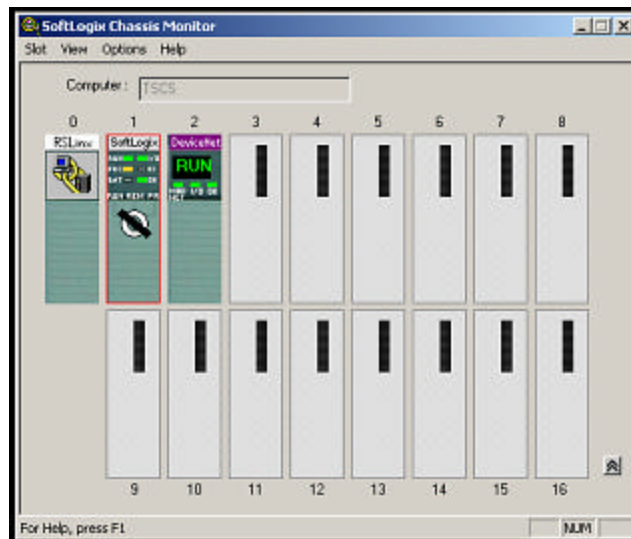
**Note:** All TSCS systems are shipped with the computer name TSCS and a Windows login of **leistritz (no password)**.

#### Adding User Accounts

1. Log onto the computer using the standard leistritz login (as noted above).
2. Go to control panel and click User Accounts
3. Click "Create a new account"
4. Enter a new account name and then click "next"
5. "Computer Administrator" must be selected.
6. Click "Create account"
7. Log Off the current account and log back in as the new account created in steps 1 – 6.

#### Configuring New User for TSCS operation

Once logged in, you will see the Softlogix Chassis Monitor appear on the screen. This is the actual controller for TSCS.



*SoftLogix Chassis Monitor*

Configure the Chassis Monitor as follows:

1. In the View menu check off both "Hide slots 9 – 16" and "Compact"
2. In the Options Menu check off "Start Minimized" and "Hide when Minimized".
3. Right-click the "SoftLogix" module (slot 1) and confirm that "Last Controller State" is selected for "Startup Mode".
4. Click the X in the upper right hand corner to close the Chassis Monitor.

## **Configure Windows**

1. Right-click on the desktop, select properties and set the Theme to Windows Classic.
2. Right-click the Windows Start button, select Properties|Taskbar and check the "Auto-Hide the taskbar " option.
3. Go to the Control Panel and verify that the Windows Firewall is disabled.
4. Open the "Power Options" dialog and set "Turn off monitor" and "Turn off hard disks" to Never.
5. Open the Regional and Language Options dialog and click the Customize button on the Regional Options tab. Click the Date tab and set Short Date Format to MM/dd/yy then click OK.
6. Open Windows Explorer and go to c:\program files\TSCS. Right click on the TSCS program icon and select Send To | Desktop (create shortcut)
7. If desired, go to the Manuals folder (under the TSCS folder) and create Desktop shortcuts for the Operators Manual and the Importxl Manual.