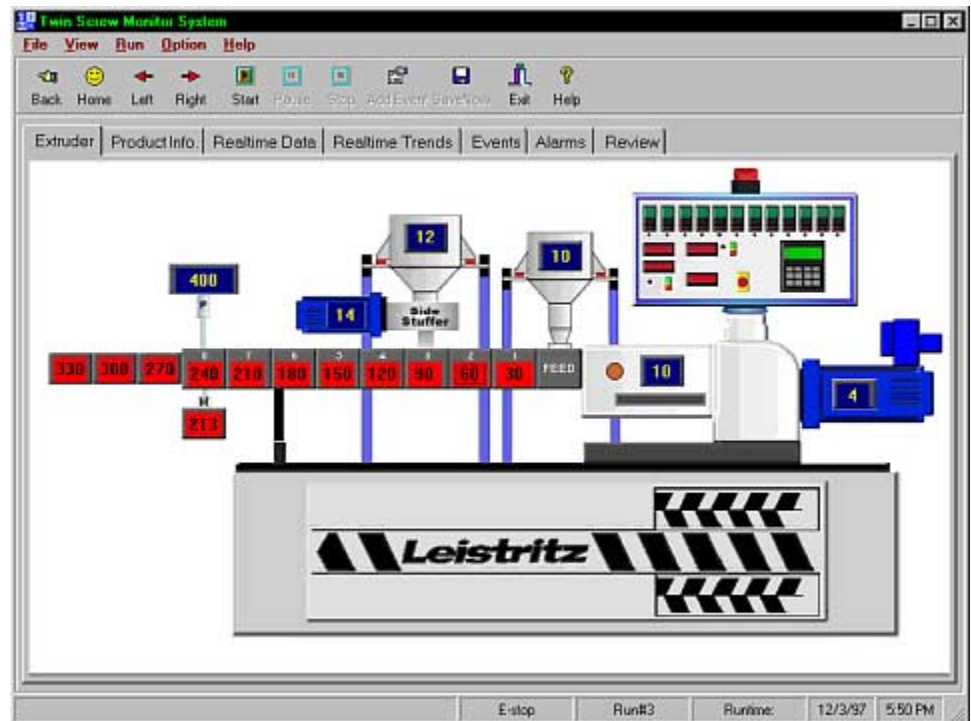


Importing Data into Excel

LTD Design Services



This manual was produced using *Doc-To-Help*®, by LTD Design Services, Inc.

***LTD* Design Services**

160 Market St. Ste. 7
Saddle Brook, NJ 07663

Phn: 973-728-9105

Fax: 973-728-9108

Email: support@LTDdesign.com

Contents

- IMPORTING TSMS DATA INTO EXCEL1**
- WHERE'S MY DATA ??1
- TSMS DATA FORMAT.....1
- IMPORTING TSMS DATA.....2
- USING TSMS DATA.XLS.....5**
- Importing data into TSMS Data.xls*5

Importing TSMS data into Excel

Where's my data ??

Data files generated by the Twin Screw Monitor System are stored at C:\Program Files\TSMS\Data. All TSMS systems are shipped with the first run number set to 10000. This number will increment by 1 each time you start a run.

TSMS Data Format

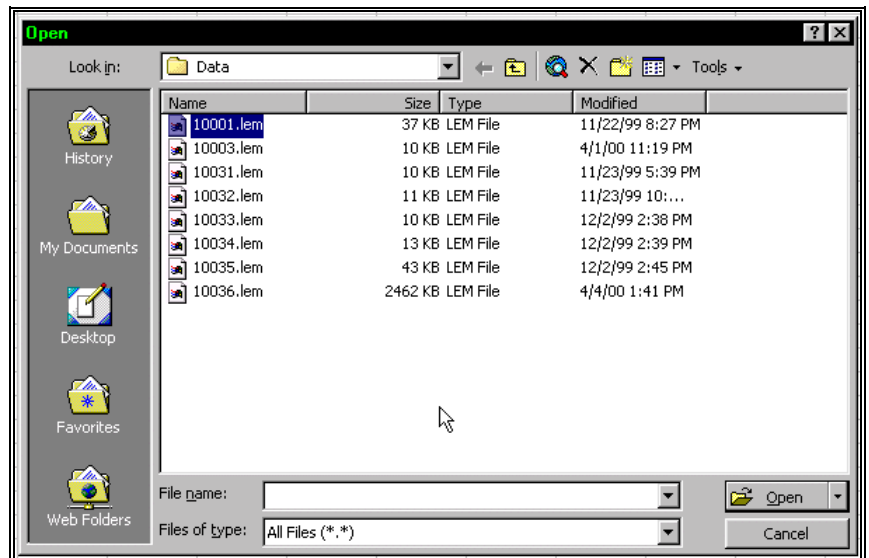
Data files generated by the Twin Screw Monitor System are stored in ASCII delimited format. This format can easily be imported into most popular spreadsheet, database and SQC/SPC programs. The following section will describe the steps taken to import TSMS data into an Excel spreadsheet.

The file extension for TSMS data files is lem (IE 10050.lem)

Importing TSMS Data

Follow the steps outlined below to import your TSMS data into Excel.

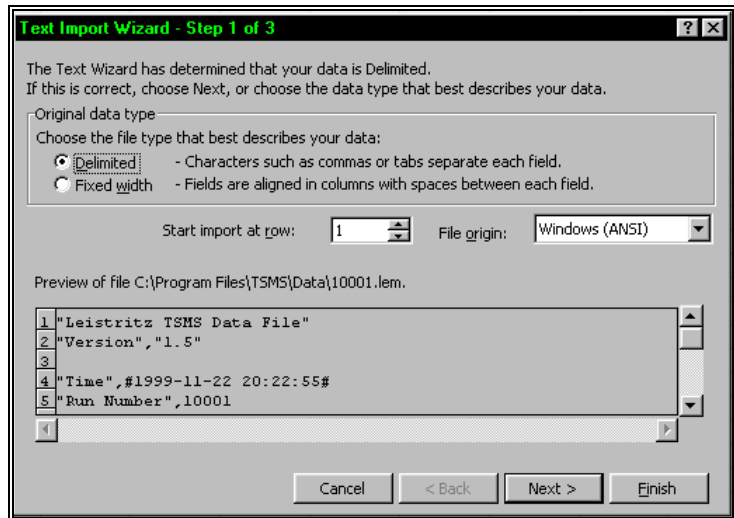
1. Open Excel
2. Choose File|Open from the Menu Bar. The Open File Dialog will appear as shown below.



The Open File Dialog

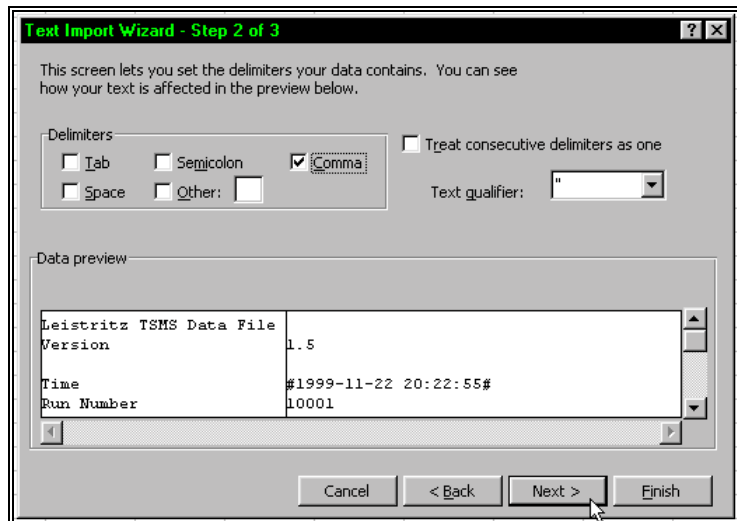
3. Use the navigation tool to "Look in" C:\Program Files\TSMS\Data
4. In the "Files of type" pull down list, select "All Files (*.*)"
5. Select the desired data file and then click the Open button

6. The Text Import Wizard will Open as shown below



The Text Import Wizard (Step 1 of 3)

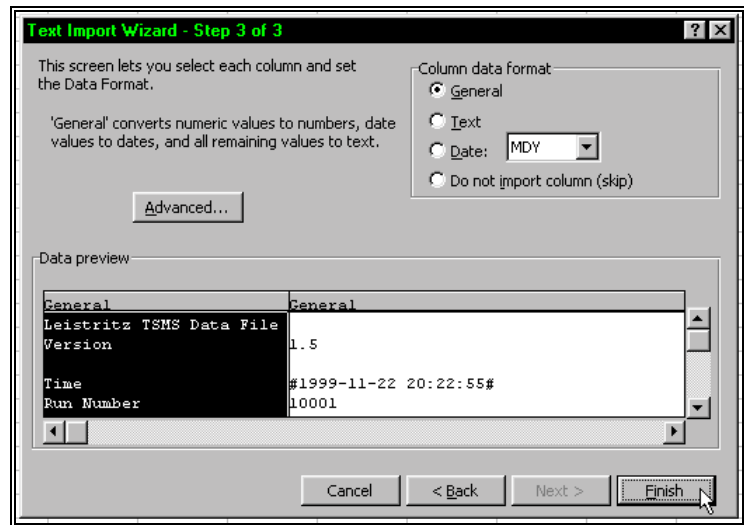
7. In step 1 of 3 make sure that “Delimited” is checked then click the Next button.
8. Step 2 of the Text Import Wizard will open as shown below



The Text Import Wizard (Step 2 of 3)

9. Step 2 of 3 generally opens with “Tab” selected as the delimiter. Uncheck “Tab” and check off “Comma” as the delimiter as shown above. Also, make sure that “ ” is selected as the Text qualifier as shown above, then click the Next button.

10. Step 3 of the Text Import Wizard will open as shown below



The Text Import Wizard (Step 2 of 3)

11. In Step 3 of the Text Import Wizard make sure that the "Column data format" selection is set to General. Next click the Finish button to open your TSMS data in the Excel spreadsheet.

Using TSMS data.xls

An Excel file for use with TSMS data is posted in the TSMS Users section of our web site at <http://www.ltddesign.com>

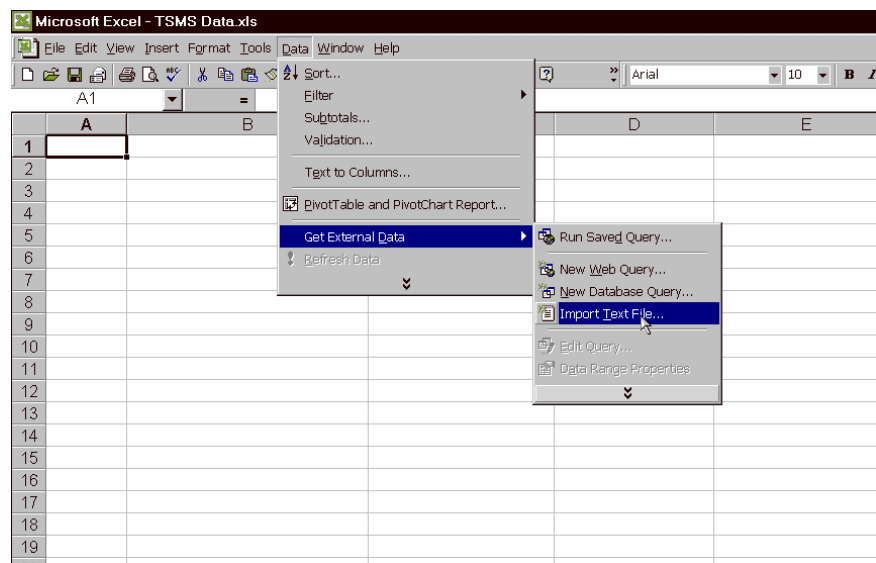
If you've download this file you can use the instructions below to import your TSMS data and the use the "Insert Time" macro to add a time base to your data.

Importing data into TSMS Data.xls

To use TSMS data.xls, first open Excel, and then open the TSMS data.xls file. Select "Enable Macros" when prompted.

Hint: You may want to keep this file in your TSMS\Data directory along with your data files.

Next choose Data|Get External Data|Import Text File as shown below.



Now follow the instructions outlined in section 1 of this document to import your TSMS data into the TSMS Data.xls file. Once you have imported you data, press Ctrl|t to active the "Insert Time" macro. This

will insert a column in your spreadsheet and add the run time in seconds next to your run data. You can then choose File|Save As to save your data to a new file name.

